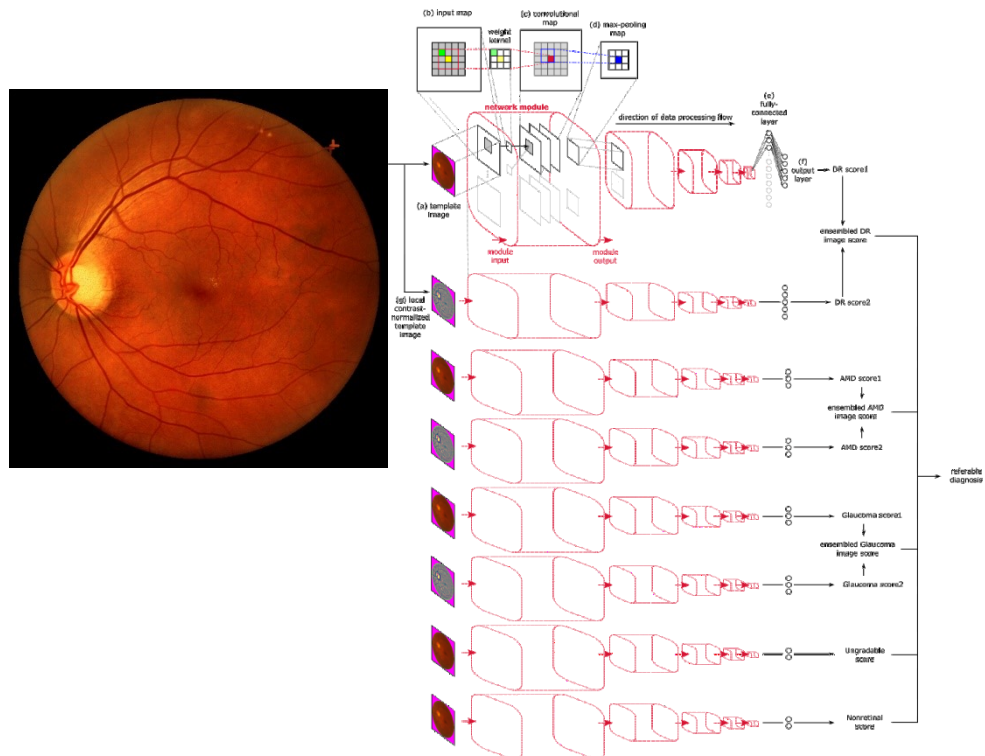


In a world first, Singapore-developed artificial intelligence system detects 3 major eye conditions

Annual screenings for diabetic retinopathy to prevent vision loss will be more efficient, more accurate and more cost effective with the new artificial intelligence (AI) system developed by the Singapore National Eye Centre (SNEC), Singapore Eye Research Institute (SERI) and National University of Singapore (NUS) School of Computing.

Other than diabetic retinopathy, the AI technology can also screen for glaucoma and age-related macular degeneration.



Read more at <https://www.channelnewsasia.com/news/health/in-a-world-first-singapore-developed-artificial-intelligence-9498742>